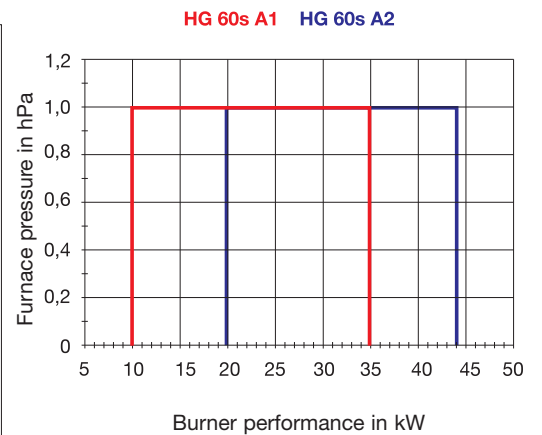


Gasburner HG Z/M 60s



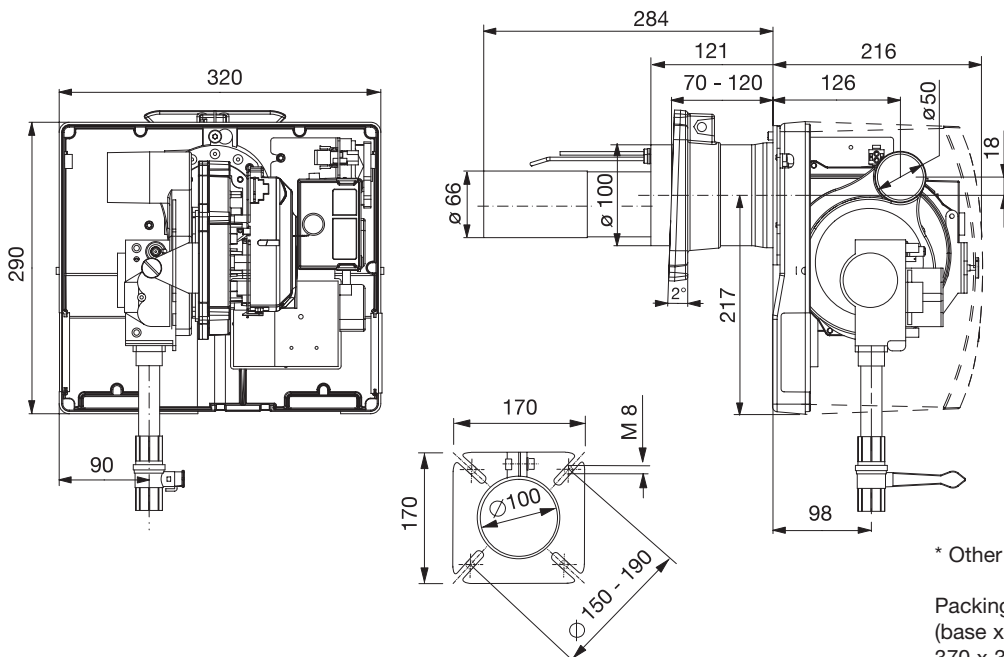
0085 BQ 0038

Type	Gas type	Minimum gas inlet pressure	Gas connection	Burner performance	Operating mode	Order no.
HG 60s A1-E	Gaz naturel	20 hPa	R 1/2	10-35 kW	une allure	3703
HG 60s A1-F	Gaz liquide	30 hPa	R 1/2	10-35 kW	une allure	3704
HG 60s A2-E	Gaz naturel	20 hPa	R 1/2	20-44 kW	une allure	3705
HG 60s A2-F	Gaz liquide	30 hPa	R 1/2	20-44 kW	une allure	3706
HGZ 60s A1-E	Gaz naturel	20 hPa	R 1/2	10-35 kW	deux allures	3707
HGZ 60s A1-F	Gaz liquide	30 hPa	R 1/2	10-35 kW	deux allures	3708
HGZ 60s A2-E	Gaz naturel	20 hPa	R 1/2	20-44 kW	deux allures	3709
HGZ 60s A2-F	Gaz liquide	30 hPa	R 1/2	20-44 kW	deux allures	3710
HGM 60s A1-E	Gaz naturel	20 hPa	R 1/2	10-35 kW	modulant	3711
HGM 60s A1-F	Gaz liquide	30 hPa	R 1/2	10-35 kW	modulant	3712
HGM 60s A2-E	Gaz naturel	20 hPa	R 1/2	20-44 kW	modulant	3713
HGM 60s A2-F	Gaz liquide	30 hPa	R 1/2	20-44 kW	modulant	3714



- Designed as premixing surface burner
- Low-NO_x-mixing unit certified according EN 676 (classe 3)
- 1 / 2 - stage and modulating
- Mélange gaz-air combustion pneumatique

- Electronic ignition unit
- High pressure fan
- Ionisation electrode for flame detection
- (optional) air inlet adapter



* Other lengths on request

Packing dimensions
(base x height):
370 x 350 x 550 mm
Transporting weight: 11,5 kg
All dimensions in mm