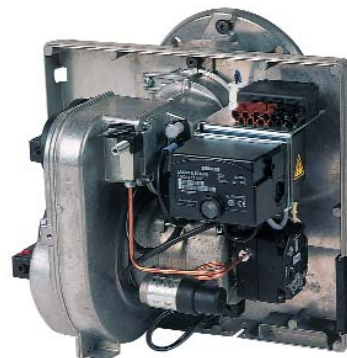


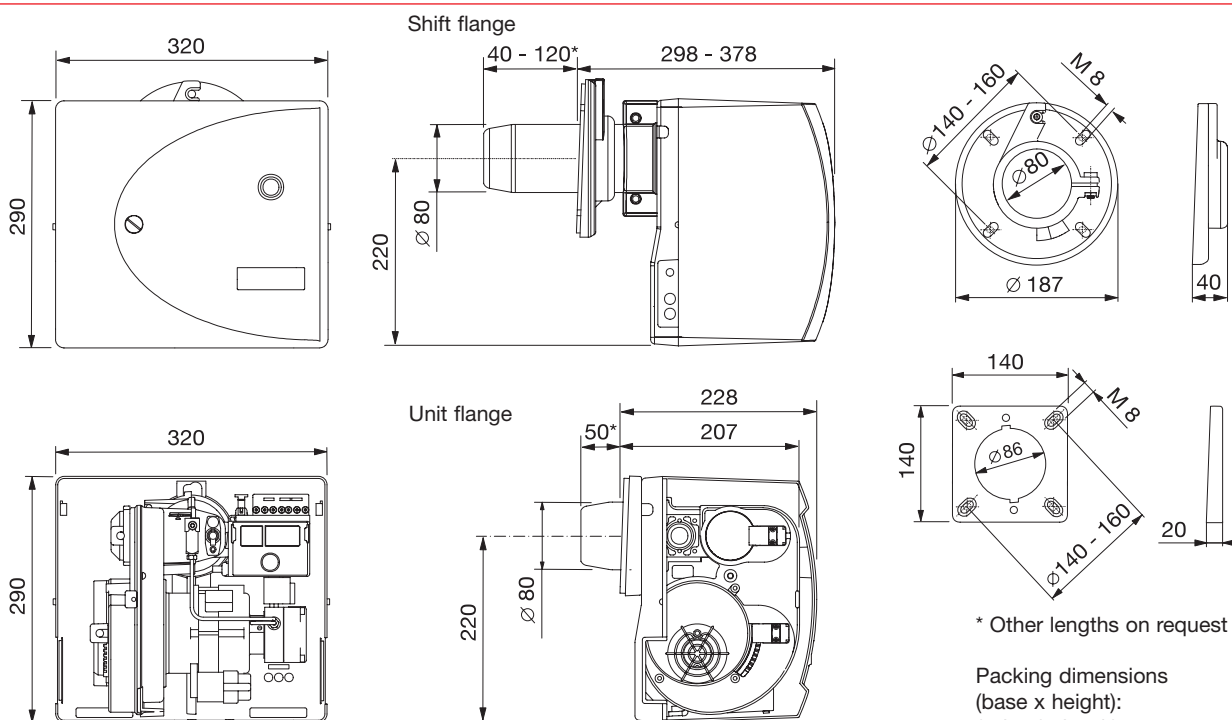
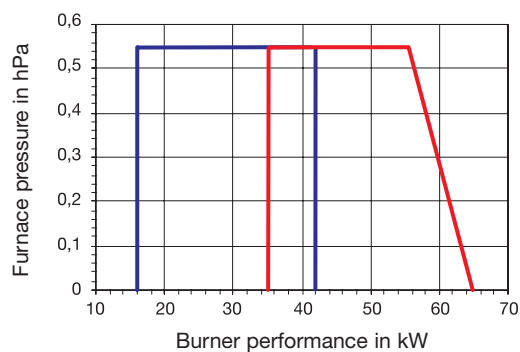
# Oilburner HL 60 E/F-S



| Type          | Oil mass flow  | Burner performance | Operating mode | Order-no. |
|---------------|----------------|--------------------|----------------|-----------|
| HL 60 ELV.2-S | 1,3 - 3,5 kg/h | 16 - 42 kW         | 1-stage        | 5803      |
| HL 60 FLV.2-S | 3,0 - 5,5 kg/h | 35 - 65 kW         | 1-stage        | 5810      |

- Low-NO<sub>x</sub>-mixing unit certified according RAL-UZ 9 (Blue Angel)
- Microprocessor-based control
- Automatic air damper
- High pressure fan
- Electronic ignition unit
- LE-system for reduced emissions during start up and stop
- Photo resistor for flame detection

HL 60 ELV.2-S HL 60 FLV.2-S



\* Other lengths on request

Packing dimensions  
(base x height):  
350 x 370 x 485 mm  
Transporting weight: 13,5 kg  
All dimensions in mm